

Power cable accessories catalogue

Cable Lugs and Connectors



Jointing Tech

THE POWER TO DELIVER





Jointing Tech

Renewables | A brighter future

Jointing Tech is a specialist electrical distributor supplying a full range of power cable and accessories into the renewable energy sector.

The Jointing Tech range includes:

- Distribution Transformers
- Switchgear
- Earthing (inc HDC Cable)
- MV Joints
- MV Terminations
- MV Power Cable
- Earthing Design
- Installation
- Lugs & Connectors
- Tool Hire & Sales

Drawing on our Group expertise, Jointing Tech can assist you with the selection of the correct products for use on all your renewable energy projects.

www.jointingtech.co.uk

THE POWER TO DELIVER

Cable Lugs and Connectors

Contents

Pre-Insulated Terminals	20
LV Lugs	21
LV Lugs & Splices	23
LV Mechanical Lugs	26
MV Lugs	27
MV Mechanical Lugs	28
MV Mechanical Lugs & Crimp Slices	29
MV Mechanical Connectors	31
MV/HV Mechanical Lugs	33
HV Mechanical Lugs	34
HV Mechanical Lugs & Connectors	35



This 'mini-catalogue' focusing on Cable Lugs and Connectors is part of a larger, more comprehensive Power Cable Accessories Catalogue produced by Jointing Tech.

Please visit our website for more information and/or a copy of the full catalogue.

www.jointingtech.co.uk



Jointing Tech

Jointing Tech Branches:

Woking

Unit 19
Woking Business Park
Albert Drive
Woking
GU21 5JY

Tel: 01483 747747

Bristol

The Alpha Centre
Armstrong Way
Great Western Business Park
Yate
Bristol
BS37 5NG

Tel: 01454 322555

Norton Canes

Unit 15-16
Bellsizes Close
Norton Canes
Staffordshire
WS11 9TQ

Tel: 01543 450555

Quality and Industry Accreditation



Jointing Tech Group:

Langley Engineering Ltd

16 The Markham Centre
Theale
Reading
Berkshire
RG7 4PE

Tel: 0118 930 5990

Jointing Tech – Trace Heating Department

Unit 4 Eversley Way
Thorpe Industrial Estate
Egham
Surrey
TW20 8RG

Tel: 01784 279005

Jointing Technologies is part of Toolout Limited.
© Toolout Limited. All rights reserved.
Registered in England. Company Number 2281668

www.jointingtech.co.uk



Jointing Tech

Renewables | A brighter future

Jointing Tech is a specialist electrical distributor supplying a full range of power cable and accessories into the renewable energy sector.

The Jointing Tech range includes:

- Distribution Transformers
- Switchgear
- Earthing (inc HDC Cable)
- MV Joints
- MV Terminations
- MV Power Cable
- Earthing Design
- Installation
- Lugs & Connectors
- Tool Hire & Sales

Drawing on our Group expertise, Jointing Tech can assist you with the selection of the correct products for use on all your renewable energy projects.

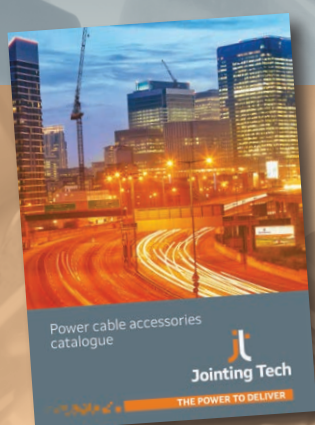
www.jointingtech.co.uk

THE POWER TO DELIVER

Cable Lugs and Connectors

Contents

Pre-Insulated Terminals	20
LV Lugs	21
LV Lugs & Splices	23
LV Mechanical Lugs	26
MV Lugs	27
MV Mechanical Lugs	28
MV Mechanical Lugs & Crimp Slices	29
MV Mechanical Connectors	31
MV/HV Mechanical Lugs	33
HV Mechanical Lugs	34
HV Mechanical Lugs & Connectors	35



This 'mini-catalogue' focusing on Cable Lugs and Connectors is part of a larger, more comprehensive Power Cable Accessories Catalogue produced by Jointing Tech.

Please visit our website for more information and/or a copy of the full catalogue.

www.jointingtech.co.uk

Ring Terminals

FEATURES

- Pre-insulated halogen free ring type terminal with funnel entry



Part number	Colour	Hole Size	Conductor Size
RF-M	Red	3, 3.5, 4, 5, 6, 8, 10, 12mm	0.25-1.5mm ²
BF-M	Blue	3, 3.5, 4, 5, 6, 8, 10, 12mm	1.5-2.5mm ²
GF-M	Yellow	3.5, 4, 5, 6, 8, 10, 12mm	4-6mm ²

Butt Connectors

FEATURES

- Pre-insulated straight connectors with funnel entry



Part number	Colour	Conductor Size
PL03-M	Red	0.25-1.5mm ²
PL06-M	Blue	1.5-2.5mm ²
PL1-M	Yellow	4-6mm ²

Pin Terminals

FEATURES

- Pre insulated halogen free pin type terminal with funnel entry



Part number	Colour	Pin Length	Conductor Size
RF-P	Red	8, 10, 12mm	0.25-1.5mm ²
BF-P	Blue	8, 10, 12mm	1.5-2.5mm ²
GF-P	Yellow	10, 12, 14mm	4-6mm ²

Blade Terminals

FEATURES

- Pre insulated halogen free blade type terminal with funnel entry



Part number	Colour	Blade Length	Conductor Size
RF-PP	Red	13, 17mm	0.25-1.5mm ²
BF-PP	Blue	13, 17mm	1.5-2.5mm ²
GF-PP	Yellow	13, 17mm	4-6mm ²

Also available in this range are Fork terminals, male and female disconnect and end sleeves.

LV Copper Lugs



FEATURES

- Designed to be crimped on to a conductor to facilitate the termination of the cable via the lug hole
- Copper lugs are electrolytically tin plated to avoid oxidation
- Each terminal has a sight hole for visual inspection of the conductor inserted
- 1000V Rated

LV copper tube crimping lugs

Part number	Hole Size	Conductor Size
A03-M	3.5, 4, 5, 6mm	1.5mm ²
A06-M	3.5, 4, 5, 6, 8mm	2.5mm ²
A1-M	3.5, 4, 5, 6, 8mm	4-6mm ²
A2-M	3, 4, 5, 6, 8,10mm	10mm ²
A3-M	4, 5, 6, 8,10,12mm	16mm ²
A5-M	4, 5, 6, 8,10,12mm	25mm ²
A7-M	5, 6, 8,10,12mm	35mm ²
A10-M	6, 8,10,12, 14,16mm	50mm ²
A14-M	6, 8,10,12, 14,16mm	70mm ²
A19-M	8,10,12, 14,16, 20mm	95mm ²

Part number	Hole Size	Conductor Size
A24-M	8,10,12, 14,16, 20mm	120mm ²
A30-M	8,10,12, 14,16, 20mm	150mm ²
A37-M	8,10,12, 14,16, 20mm	185mm ²
A48-M	10,12, 14,16, 20mm	240mm ²
A60-M	10,12, 14,16, 20mm	300mm ²
A80-M	12,16,20mm	400mm ²
A100-M	16, 20mm	500mm ²
A120-M	16, 20mm	630mm ²
A160-M	16, 20mm	800mm ²
A200-M	16, 20mm	1000mm ²

LV Narrow Palm Copper Lugs



FEATURES

- Designed to be crimped onto a conductor to facilitate the termination of the cable via the lug hole in tight spaces and reduced space terminal blocks
- Copper lugs are electrolytically tin plated to avoid oxidation
- Each terminal has a sight hole for visual inspection of the conductor inserted
- Please refer to our tooling and equipment section on page 212 for dies and tooling
- 1000V Rated
- Tested to BS EN 61238

LV narrow palm copper tube crimping lugs

Part number	Palm Width	Hole Size	Conductor Size
BTN10-M	9mm	5mm	10mm ²
BTN16-M	9mm	5mm	16mm ²
BTN25-M	9mm	5mm	25mm ²
BTN35-M	11.5mm	6mm	35mm ²
BTN50-M	11.5mm	6mm	50mm ²
BTN70-M	11.5mm	6mm	70mm ²

Part number	Palm Width	Hole Size	Conductor Size
BTN95-M	15.5mm	8mm	95mm ²
BTN120-M	19mm	8, 10mm	120mm ²
BTN150-M	19mm	8, 10mm	150mm ²
BTN185-M	24.5mm	10mm	185mm ²
BTN240-M	31mm	10, 12, 16mm	240mm ²
BTN300-M	31mm	10, 12mm	300mm ²

LV 2 Bolt Copper Lugs

FEATURES

- Designed to facilitate the termination of the cable via two lug holes
- 1000V Rated
- Tested to BS EN 61238



LV 2 bolt copper tube crimping lugs

Part number	Hole Size	Conductor Size
A24-2M8	2 x 8mm	120mm ²
A30-2M12	2 x 12mm	150mm ²
A37-2M12	2 x 12mm	185mm ²
A48-2M12	2 x 12mm	240mm ²
A60-2M12	2 x 12mm	300mm ²

Part number	Hole Size	Conductor Size
A80-2M12	2 x 12mm	400mm ²
A100-2M12	2 x 12mm	500mm ²
A120-2M12	2 x 12mm	630mm ²
A160-2M12	2 x 12mm	800mm ²

LV Copper Pin Terminal

FEATURES

- Designed to be crimped to reduce conductor size for termination into contact blocks
- 1000V Rated
- Tested to BS EN 12449



LV copper reducing pin terminal

Part number	Pin Diameter	Conductor Size
L10PIN	3.8mm	10mm ²
L16PIN	3.7mm	16mm ²
L25PIN	5mm	25mm ²
L35PIN	5mm	35mm ²
L50PIN	7.5mm	50mm ²
L70PIN	8mm	70mm ²
L95PIN	8mm	95mm ²

Part number	Pin Diameter	Conductor Size
L120PIN	10mm	120mm ²
L150PIN	10mm	150mm ²
L185PIN	14mm	185mm ²
L240PIN	14mm	240mm ²
L300PIN	16mm	300mm ²
L400PIN	16mm	400mm ²

LV 4 Bolt Copper Lugs

FEATURES

- Designed to facilitate the termination of a cable on to a transformer
- 1000V Rated
- Tested to BS EN 61238



LV 4 bolt fixing transformer lugs

Part number	Hole Size	Conductor Size
A37-4ESI	4 x 8mm	185mm ²
A48-4ESI	4 x 8mm	240mm ²
A60-4ESI	4 x 8mm	300mm ²
A80-4ESI	4 x 8mm	400mm ²

Part number	Hole Size	Conductor Size
A100-4ESI	4 x 8mm	500mm ²
A120-4ESI	4 x 8mm	630mm ²
A160-4ESI	4 x 8mm	800mm ²
A200-4ESI	4 x 8mm	1000mm ²

LV Copper Lugs - Angled 90°



LV copper tube crimping lugs angled at 90°

FEATURES

- Designed to be crimped on to a conductor to facilitate the termination of a cable where a 90° angle is required.
- Copper lugs are electrolytically tin plated to avoid oxidation
- Cembre lugs are annealed to guarantee optimum ductility which is an absolute necessity for connectors that will have to withstand the severe deformation arising when compressed and any bending of the palm during installation
- 1000V Rated
- Tested to BS EN 61238

Part number	Hole Size	Conductor Size
LR50-M	6, 8, 10, 12mm	50mm ²
LR70-M	8, 10, 12mm	70mm ²
LR95-M	8, 10, 12mm	95mm ²
LR120-M	10, 12mm	120mm ²

Part number	Hole Size	Conductor Size
LR150-M	10, 12mm	150mm ²
LR185-M	10, 12mm	185mm ²
LR240-M	12mm	240mm ²
LR300-M	12mm	300mm ²

LV Copper Splices



LV copper crimp splices

FEATURES

- Designed to be crimped onto same size conductors to connect and create a straight connection
- Features an internal taper at both ends to ease the introduction of the conductor and a central stop to ensure correct positioning
- Electrolytically tin plated with minimum thickness of 3µm to avoid oxidation
- 1000V Rated
- Tested to BS EN 61238

Part number	Conductor Size
L03-M	1.5mm ²
L06-M	2.5mm ²
L1-M	4-6mm ²
L2-M	10mm ²
L3-M	16mm ²
L5-M	25mm ²
L7-M	35mm ²
L10-M	50mm ²
L14-M	70mm ²
L19-M	95mm ²

Part number	Conductor Size
L24-M	120mm ²
L30-M	150mm ²
L37-M	185mm ²
L48-M	240mm ²
L60-M	300mm ²
L80-M	400mm ²
L100-M	500mm ²
L120-M	630mm ²
L160-M	800mm ²
L200-M	1000mm ²

LV Aluminium Lugs

FEATURES

- Designed to be crimped on to a conductor to facilitate the termination of the cable via the lug hole
- Aluminium lugs are made from 99.5% pure aluminium
- Barrels are capped and filled with grease so as to avoid oxidation of the aluminium
- Non-circular conductors may require pre-rounding prior to the introduction to the terminal
- Increased barrel length and internal taper to ease the introduction of the conductor
- 1000V Rated
- Tested to BS EN 61238



LV aluminium tube crimping lugs

Part number	Size	Conductor Size
AA16-M	8mm	16mm ²
AA25-M	8mm	25mm ²
AA35-M	8, 10mm	35mm ²
AA50-M	12, 14mm	50mm ²
AA70-M	12, 14mm	70mm ²
AA95-M	12, 14mm	95mm ²

Part number	Size	Conductor Size
AA120-M	12, 14mm	120mm ²
AA150-M	12, 14mm	150mm ²
AA185-M	12, 14mm	185mm ²
AA240-M	12, 14mm	240mm ²
AA300-34-M	12, 14, 16mm	300mm ²

LV Aluminium Splices

FEATURES

- Designed to be crimped on to same size conductors to connect and create a straight connection
- Aluminium splices are made from 99.5% pure aluminium
- Features a solid stop which creates a barrier between the two conductors
- Barrels are capped and filled with grease so as to avoid oxidation of the aluminium
- Non-circular conductors may require pre-rounding prior to the introduction to the splice
- 1000V Rated
- Tested to BS EN 61238
- CE Approved



LV aluminium tube crimp splices

Part number	Conductor Size
MTMA10-GC	10mm ²
MTMA16-GC	16mm ²
MTMA25-GC	25mm ²
MTMA35-GC	35mm ²
MTMA50-GC	50mm ²
MTMA70-GC	70mm ²
MTMA95-GC	95mm ²

Part number	Conductor Size
MTMA120-GC	120mm ²
MTMA150-GC	150mm ²
MTMA185-GC	185mm ²
MTMA240-GC	240mm ²
MTMAD300-GC	300mm ²

LV Aluminium Mechanical Lugs



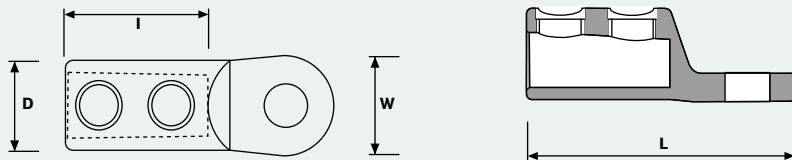
LV aluminium mechanical lugs for use on solid sectoral aluminium conductors

FEATURES

- Designed to be connected on to a conductor to facilitate the termination of the cable without the need for crimping
- Low torque shear head bolts
- Solid moisture block between palm and barrel
- Range taking
- Designed to meet BS 4579 Part 3 and Engineering Recommendation C79

Part number	Stud Size	Conductor Size
LVET120	12, 16mm	95-120mm ²
LVET185	12, 16mm	150-185mm ²
LVET300	12, 16mm	240-300mm ²

Mechanical Lugs Data



Part number	Dimensions mm				Spanner or Socket A/F
	L	I	D	W	
LVET120	86	40	28	32	13
LVET185	104	56	35	39	19
LVET300	116	56	41	43	19

LV Brass Mechanical Lugs



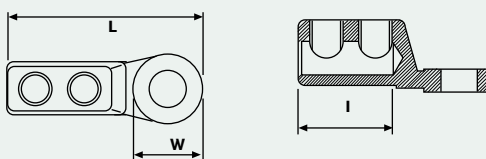
LV brass mechanical lugs for use on copper/aluminium conductors

FEATURES

- Designed to be connected on to a conductor to facilitate the termination of the cable without the need for crimping.
- Low torque shear head bolts.
- Blocked barrel to prevent water ingress
- Range taking
- Designed to meet BS 4579 and Engineering Recommendation C79

Part number	Stud Size	Conductor Size
BET35C	12mm	up to 35mm ²
BET60C	12, 16mm	up to 60mm ²
BET120C	10, 12, 16mm	up to 120mm ²

Mechanical Lugs Data

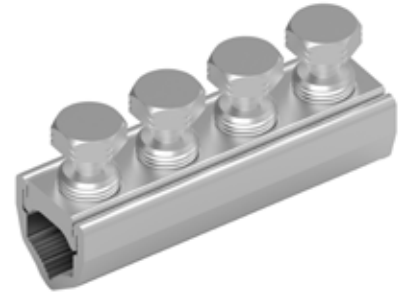


Part number	Dimensions mm			Maximum Conductor Size mm ²	Installation Tool
	L	I	W		
BET35C	55	25	20	35	3mm allen
BET60C	70	34	25	60	13mm socket
BET120C	86	46	28	120	16mm socket

LV Mechanical Connectors - Straight/Branch

FEATURES

- Designed to facilitate a simple inline connection between conductors without the need for crimping
- Shear bolt technology to ensure a good electrical connection
- Can be used as a transition connector between cables with different conductor constructions
- JP1 available with brass transitional gauze as option for copper conductors

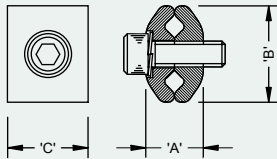


LV mechanical connector for inline joints

Part number	Manufacturer	Conductor Size
JP1	TE Connectivity	up to 35mm ²
MCB25	TE Connectivity	4-25mm ²
MCB50	TE Connectivity	4-50mm ²
MCB70	TE Connectivity	10-70mm ²
UST95	TE Connectivity	35-95mm ²

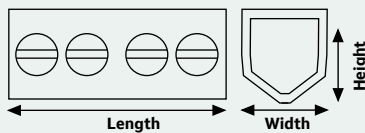
Part number	Manufacturer	Conductor Size
UST185	TE Connectivity	35-185mm ²
UST300	TE Connectivity	70-300mm ²
UBR95	TE Connectivity	16-95mm ²
UBR185	TE Connectivity	16-185mm ²
UBR300	TE Connectivity	95-300mm ²

JP1 Data



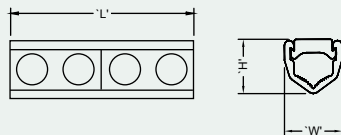
Reference	Dimensions mm		
	A	B	C
JP1	14.5	24	20

MCB Data



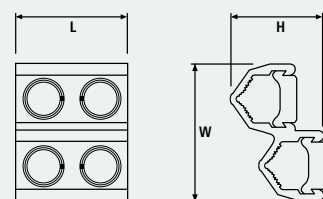
Reference	Dimensions mm		
	Length	Height	Width
MCB25	38	14	12
MCB50	45	16	14
MCB70	53	18	16

UST Data



Reference	Dimensions mm		
	L	H	W
UST95	80	25	25
UST185	108	32	34
UST300	108	36	40

UBR Data



Reference	Dimensions mm		
	Length	Height	Width
UBR95	40	36	49
UBR185	54	45	66
UBR300	54	52	77

MV Copper Lugs



MV copper tube crimping lugs

FEATURES

- Designed to be crimped on to a conductor to facilitate the termination of the cable via the lug hole
- Absence of inspection hold prevents ingress of moisture into crimp
- MV copper lugs are electrolytically tin plated to avoid oxidation
- MV copper lugs have a double length barrel for enhanced electrical & mechanical performance
- Please refer to our tooling and equipment section on page 212 for dies and tooling
- 33kV rated
- Tested to BS EN 61238
- UL Listed (up to 300mm²)
- DEF Standard 59-71 Approved

Part number	Size	Conductor Size
2A3-M	8, 10mm	16mm ²
2A5-M	8, 10, 12mm	25mm ²
2A7-M	8, 10, 12mm	35mm ²
2A10-M	10, 12, 14, 16mm	50mm ²
2A14-M	10, 12, 14, 16mm	70mm ²
2A19-M	10, 12, 14, 16, 20mm	95mm ²
2A24-M	10, 12, 14, 16, 20mm	120mm ²
2A30-M	10, 12, 14, 16, 20mm	150mm ²

Part number	Size	Conductor Size
2A37-M	12, 14, 16, 20mm	185mm ²
2A48-M	12, 14, 16, 20mm	240mm ²
2A60-M	12, 14, 16, 20mm	300mm ²
2A80-M	12, 14, 16, 20mm	400mm ²
2A100-M	16, 20mm	500mm ²
2A120-M	16, 20mm	630mm ²
2A160-M	20mm	800mm ²
2A200-M	20mm	1000mm ²

MV 2 Bolt Copper Lugs



MV 2 bolt copper tube crimping lugs

FEATURES

- Designed to be crimped on to a conductor to facilitate the termination of the cable via the two lug holes
- Absence of inspection hold prevents ingress of moisture into crimp
- MV copper lugs are electrolytically tin plated to avoid oxidation
- MV copper lugs have a double length barrel for enhanced electrical and mechanical performance
- Please refer to our tooling and equipment section on page 212 for dies and tooling
- 33kV rated
- Tested to BS EN 61238
- UL Listed (up to 300mm²)
- DEF Standard 59-71 Approved

Part number	Hole Size	Conductor Size
CA25-2M	8, 12mm	25mm ²
CA35-2M	12mm	35mm ²
CA50-2M	12mm	50mm ²
CA70-2M	12mm	70mm ²
CA95-2M	12mm	95mm ²
CA120-2M	12mm	120mm ²
CA150-2M	12mm	150mm ²

Part number	Hole Size	Conductor Size
CA185-2M	12mm	185mm ²
CA240-2M	12mm	240mm ²
CA300-2M	12mm	300mm ²
2A80-2M	12, 14, 16mm	400mm ²
2A100-2M	14, 16mm	500mm ²
2A120-2M	14, 16mm	630mm ²

MV Mechanical Lugs - 11-42kV

FEATURES

- Designed to be connected on to a conductor to facilitate the termination of the cable without the need for crimping
- High tensile tin plated aluminium alloy
- Shear bolt technology to ensure a good electrical connection
- Solid moisture block between palm and barrel
- Smooth profile prevents damage to insulation or sealing sleeves
- No elongation during installation
- Wide application range
- Compact design
- Larger sizes available on request.
- For solid copper and aluminium conductors please contact your nearest sales office
- 42kV Rated

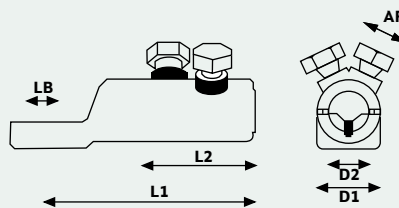


MV mechanical lug for copper & aluminium conductors

Part number	Stud Size	Conductor Type	Conductor Size
BLMT-25/95	12, 16mm	Cu / Ali	25-95mm ²
BLMT-35/150	12, 16mm	Cu / Ali	35-150mm ²
BLMT-95/240	12, 16mm	Cu / Ali	95-240mm ²
BLMT-120/300	12, 16mm	Cu / Ali	120-300mm ²

Part number	Stud Size	Conductor Type	Conductor Size
BLMT-185/400	12, 16, 20mm	Cu / Ali	185-400mm ²
BLMT-500/630	12, 16, 20mm	Cu / Ali	500-630mm ²
BLMT-800	20mm	Cu / Ali	800mm ²

Mechanical Lugs Data



Part number	Conductor Range mm ²	Hole Size mm LB	Dimensions mm				Contact bolts	
			L1	L2	D1	D2	Quantity	Head size AF mm
BLMT-25/95-13	25-95	13	60	30	24	12.8	1	13
BLMT-25/95-17	25-95	17	60	30	24	12.8	1	13
BLMT-35/150-13	35-150	13	86	35	28	15.8	1	17
BLMT-35/150-17	35-150	17	86	35	28	15.8	1	17
BLMT-95/240-13	95-240	13	112	60	33	20	2	19
BLMT-95/240-17	95-240	17	112	60	33	20	2	19
BLMT-120/300-13	120-300	13	115	65	37	24	2	22
BLMT-120/300-17	120-300	17	115	65	37	24	2	22
BLMT-185/400-13	185-400	13	138	80	42	25.5	3	22
BLMT-185/400-17	185-400	17	138	80	42	25.5	3	22
BLMT-185/400-21	185-400	21	138	80	42	25.5	3	22
BLMT-500/630-13	500-630	13	150	95	50	33	3	22
BLMT-500/630-17	500-630	17	150	95	50	33	3	22
BLMT-500/630-21	500-630	21	150	95	50	33	3	22
BLMT-800	800	20	202	120	56	36	4	27

MV Mechanical Lugs - up to 33kV



MV 2 bolt mechanical lug for copper & aluminium conductors

FEATURES

- Shear bolt technology to ensure a good electrical connection
- Solid moisture block between palm and barrel
- Smooth profile prevents damage to insulation or sealing sleeves
- Supplied with range taking bolts to cover multiple cable sizes
- Primarily used on copper conductors
- Designed to meet BS4579 Part 1
- 44mm hole centres
- All bolts use 19mm socket or spanner
- Indoor/outdoor applications

Part number	Hole Spacing	Conductor Type	Conductor Size
VETB21-OHUTB	44mm	Cu / Ali	50-185mm ²
VETB28-OHUTB	44mm	Cu / Ali	185-400mm ²

Part number	Hole Spacing	Conductor Type	Conductor Size
VETB33-OHUTB	44mm	Cu / Ali	400-630mm ²
VETB37-OHUTB	44mm	Cu / Ali	800mm ²

Mechanical Connectors Data



Part number	End Termination Dimensions mm					
	L	B	HC	Dia	Bore Depth	Palm Hole Dia
VETB21-OHUTB	148.5	62	25	21.0	59.5	13.0
VETB28-OHUTB	164	73	24.9	28.0	65.5	13.0
VETB33-OHUTB	157.5	70	25	33.5	65.5	13.0
VETB37-OHUTB	200	94	35	37.5	84.0	13.0

MV Copper Splices



MV copper tube crimping splices

FEATURES

- Designed to be crimped on to same size conductors to connect and create a straight connection
- MV copper splices are electrolytically tin plated to avoid oxidation
- MV copper splices have extended tube length for simplified crimping
- Please refer to our tooling and equipment section for dies and tooling
- 33kV rated
- Tested to BS EN 61238
- UL Listed (up to 300mm²)
- DEF Standard 59-71 Approved

Part number	Conductor Size
MT16-TD	16mm ²
MT25-TD	25mm ²
MT35-TD	35mm ²
MT50-TD	50mm ²
MT70-TD	70mm ²
MT95-TD	95mm ²
MT120-TD	120mm ²

Part number	Conductor Size
MT150-TD	150mm ²
MT185-TD	185mm ²
MT240-TD	240mm ²
MT300-TD	300mm ²
MT400-TD	400mm ²
MT500-TD	500mm ²
MT630-TD	630mm ²

MV Copper Splices

FEATURES

- Designed to be crimped on to same size conductor to connect and create a straight connection
- MV copper splices are electrolytically tin plated to avoid oxidation
- MV copper splices have extended tube length for simplified crimping
- MT-GC range has a waterblock in the connectors which forms a barrier between the two conductors



MV copper tube waterblocked crimp splices

Part number	Conductor Size
MT25-GC	25mm ²
MT35-GC	35mm ²
MT50-GC	50mm ²
MT70-GC	70mm ²
MT95-GC	95mm ²
MT120-GC	120mm ²

Part number	Conductor Size
MT150-GC	150mm ²
MT185-GC	185mm ²
MT240-GC	240mm ²
MT300-GC	300mm ²
MT400-GC	400mm ²

MV Mechanical Connectors - Split Blocked - up to 33kV

FEATURES

- Designed to connect two HV conductors inline without bending the cable to make the connection
- Shear bolt technology to ensure a good electrical connection. 'V' interface ensures alignment and reduces connector resistance
- Machined from high conductivity brass or copper and supplied with range taking bolts
- Designed to meet BS 4579 Part 1
- 33kV Rated
- Solid moisture block
- Tapered ends ensure smooth profile for installation

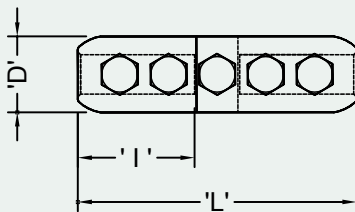


MV mechanical connectors for copper & aluminium conductors

Part number	Conductor Type	Conductor Size
VTPB21-UTB	Cu / Ali	50-240mm ²
VTPB27-UTB	Cu / Ali	95-300mm ²

Part number	Conductor Type	Conductor Size
VTPC28-UTB	Cu	120-400mm ²
VTPC36-UTB	Cu	400-645mm ²

Mechanical Lugs Data



Part number	Dimensions mm		
	L	ØD	I
VTPB21-UTB	148	41	62
VTPB27-UTB	174	47	74
VTPC28-UTB	173	47	74
VTPC36-UTB	178	55	76



FEATURES

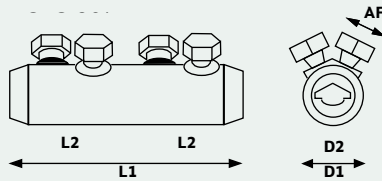
- Designed to connect two MV conductors inline without the need for crimping
- High tensile tin plated aluminium alloy
- Solid moisture block between conductors
- Conductor size based on circular stranded copper and aluminium
- Torque-controlled shear-head bolts guarantee a good electrical contact
- Easy installation with standard socket spanner
- Pre-engineered design for perfect fit in medium voltage cable accessories up to 42kV
- Tested to IEC61238-1

MV mechanical connectors for copper & aluminium conductors

Part number	Conductor Type	Conductor Size
BSMB-10/35	Cu / Ali	10-35mm ²
BSM-25/95	Cu / Ali	25-95mm ²
BSMB-35/150	Cu / Ali	35-150mm ²
BSM-95/240	Cu / Ali	95-240mm ²
BSMB-120/300	Cu / Ali	120-300mm ²

Part number	Conductor Type	Conductor Size
BSM-185/400	Cu / Ali	185-400mm ²
BSMB-500-MK2	Cu / Ali	500mm ²
BSMB-630-MK2	Cu / Ali	630mm ²
BSMB-800-MK2	Cu / Ali	800mm ²
BSMB-1000	Cu / Ali	1000mm ²

Mechanical Connectors Data



Part number	Cross-sectional range mm ²	Blocked	Dimensions mm			
			L1	L2	D1	D2
BSMB-10/35	10-35	Yes	45	20	19	8.5
BSMB-25/95	25-95	Yes	65	30	24	12.8
BSMB-35/150	35-150	Yes	80	35	28	15.8
BSM-95/240	95-240	Yes	125	60	33	20
BSMB-120/300	120-300	Yes	140	65	37	24
BSM-185/400	185-400	Yes	170	80	42	25.5
BSMB-500	500	Yes	160	70	46	30
BSMB-630	630	Yes	160	70	50	33
BSMB-800	800	Yes	180	85	56	36
BSMB-1000	1000	Yes	180	85	60	40

MV Reducing Mechanical Connectors - 11-42kV

FEATURES

- Designed to connect dissimilar sized MV conductors inline without the need for crimping
- High tensile tin plated aluminium alloy with solid moisture block between conductors
- Conductor size based on circular stranded copper and aluminium
- Torque-controlled shear-head bolts guarantee a good electrical contact
- Easy installation with standard socket or spanner
- Pre-engineered design for perfect fit in MV cable accessories up to 42kV
- 42kV Rated
- Tested to IEC61238-1

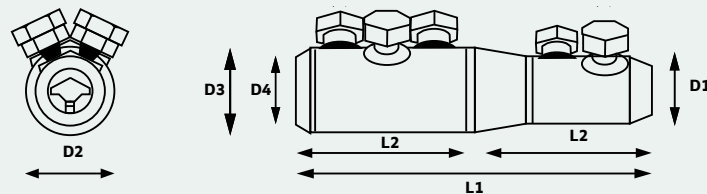


MV reducing mechanical connectors for copper & aluminium conductors

Part number	Conductor Type	Conductor Size
BSMB-25/95-95/240	Cu / Ali	25-95mm ² / 95-240mm ²
BSMB-95/240-185/400	Cu / Ali	95-240mm ² / 185-400mm ²
BSMB-185/400-500	Cu / Ali	185-400mm ² / 500mm ²
BSMB-185/400-630	Cu / Ali	185-400mm ² / 630mm ²
BSMB-500/630-MK2	Cu / Ali	500mm ² / 630mm ²

Part number	Conductor Type	Conductor Size
BSMB-500-800	Cu / Ali	500mm ² / 800mm ²
BSMB-630-800	Cu / Ali	630mm ² / 630mm ²
BSMB-630-1000	Cu / Ali	630mm ² / 1000mm ²
BSMB-800-1000	Cu / Ali	800mm ² / 1000mm ²

Mechanical Connectors Data



Product reference	Conductor Range mm ²		Blocked	Dimensions mm					
	Side 1	Side 2		L1	L2	D1	D2	D3	D4
BSMB25/95-95/240	25-95	95-240	Yes	125	60	24	12.8	33	20
BSMB95/240-185/400	95-240	185-400	Yes	170	80	33	20	42	25.5
BSMB185/400-500	185-400	500	Yes	190	90	42	25.5	46	30
BSMB185/400-630	185-400	630	Yes	200	95	42	25.5	50	33
BSMB500-630	500	630	Yes	200	95	46	30	50	33
BSMB500-800	500	800	Yes	180	85	46	30	56	36
BSMB630-800	630	800	Yes	180	85	50	33	56	36
BSMB630-1000	630	1000	Yes	180	85	50	33	60	40
BSMB800-1000	800	1000	Yes	180	85	56	36	60	40

MV/HV Mechanical Lugs- Up to 72kV



SICON HV mechanical lug for copper and aluminium conductors

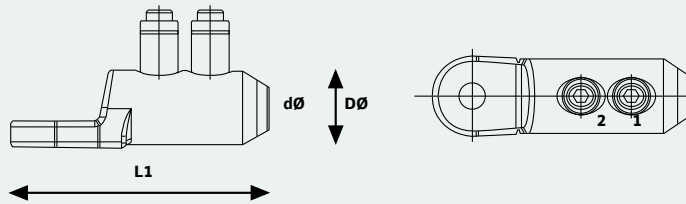
FEATURES

- Large clamping range
- Conductor channels with transverse grooves and protection against conductor oxidation
- Blind hole designed as pressure-resistant oil barrier for oil cable
- Compact design, rounded edges and flat transitions, suitable for slide on and shrink sleeves
- Centring sleeves
- Smooth breaking of the shear bolt simplifies tightening process
- No need for specialist tooling
- Conductor size based on circular stranded copper and aluminium
- 72kV Rated
- Contact technology type tested electrically and mechanically to IEC 61238-1
- Up to 30% increased contact force compared to conventional type terminals

Part number	Hole Size	Conductor Size
332 604 010	13mm	10-95mm ²
332 599 010	13mm	25-150mm ²
332 595 010	13mm	50-185mm ²
332 595 011	16mm	50-185mm ²
332 605 010	13mm	95-300mm ²

Part number	Hole Size	Conductor Size
332 605 011	16mm	95-300mm ²
332 625 010	12mm	185-400mm ²
332 625 011	16mm	185-400mm ²
332 606 010	16mm	300-630mm ²

SICON Connectors Data



Part number						L1	DØ	dØ
332 604 010	10-95mm ²	10-95mm ²	50-95mm ²	35-70mm ²	10-95mm ²	70	24	13
332 599 010	25-150mm ²	25-150mm ²	35-120mm ²	35-120mm ²	25-150mm ²	91	28	16.3
332 595 010	50-240mm ²	50-185mm ²	50-185mm ²	50-150mm ²	50-240mm ²	115	33	20
332 595 011	50-240mm ²	50-185mm ²	50-185mm ²	50-150mm ²	50-240mm ²	115	33	20
332 605 010	95-400mm ²	95-300mm ²	95-240mm ²	95-240mm ²	95-300mm ²	120	38	24
332 605 011	95-400mm ²	95-300mm ²	95-240mm ²	95-240mm ²	95-300mm ²	120	38	24
332 625 010	185-500mm ²	185-400mm ²	185-240mm ²	185-240mm ²	185-400mm ²	138	42	26
332 625 011	185-500mm ²	185-400mm ²	185-240mm ²	185-240mm ²	185-400mm ²	138	42	26
332 606 010	300-800mm ²	300-630mm ²	-	300-400mm ²	300-630mm ²	180	52	33.3

HV Mechanical Lugs - Up to 72kV

FEATURES

- Designed to be connected onto a conductor to facilitate the termination of the cable without the need for crimping
- High tensile tinned aluminium alloy
- Shear bolt technology to ensure a good electrical connection
- Solid moisture block between palm and barrel
- Fast and safe installation
- Variety of different palms available
- 72kV Rated
- Tested to IEC61238-1

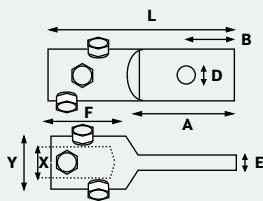


HV mechanical connectors for copper & aluminium conductors

Part number	Description
EPPA-052-xx/XX	Cable Lug Single Hole M18
EPPA-051-xx/XX	Cable Lug 2 Hole Palm M18
EPPA-054-xx/XX	Cable Lug 4 Hole Palm M14.5

Part number	Description
EPPA-050-X/Y	Cable Lug with Rod
EPPA-053-X/Y	Cable Lug with Rod
EPPA-061-X/Y	Cable Lug with Rod

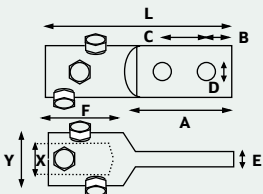
Mechanical Lugs Data EPPA-052



Part number	Dimensions mm					
	L	A	B	D	E	F
EPPA-052-X/Y	190	100	50	18	25	64

X, Y according to cable dimensions

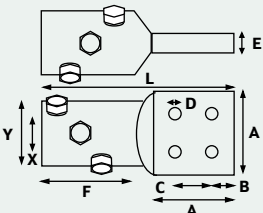
EPPA-051



Part number	Dimensions mm						
	L	A	B	C	D	E	F
EPPA-051-X/Y	190	100	27.5	45	18	25	64

X, Y according to cable dimensions

EPPA-054



Part number	Dimensions mm						
	L	A	B	C	D	E	F
EPPA-054-X/Y							
Contact plate 100 x 100	232	100	27.5	45	14.5	25	112
Contact plate 80 x 80	212	80	17.5	45	14.5	25	112

X, Y according to cable dimensions

HV Mechanical Connectors - Straight - Up to 72kV



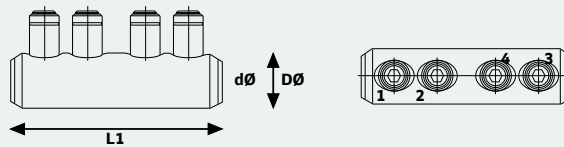
SICON HV straight mechanical connectors for copper & aluminium conductors


FEATURES

- Suitable for use on copper or aluminium conductors
- For other conductor types please refer to table below
- 72kV Rated
- Up to 30% increased contact force compared to conventional type terminals

Part number	Conductor Range
332 601 010	10-95mm ²
332 607 010 (2 bolt)	25-150mm ²
332 593 010 (4 bolt)	25-150mm ²
332 592 010	50-240mm ²
332 614 010	50-240mm ²
332 602 010	95-400mm ²
332 617 010	185-500mm ²
332 603 010	300-800mm ²

Blocked Straight Connectors Data



Part number						L1	DØ	dØ
332 601 010	10-95mm ²	10-95mm ²	50-95mm ²	35-70mm ²	10-95mm ²	65	24	13
332 607 010	25-150mm ²	25-150mm ²	35-120mm ²	35-120mm ²	25-150mm ²	68	28	16.3
332 593 010	25-150mm ²	25-150mm ²	35-120mm ²	35-120mm ²	25-150mm ²	102	28	16.3
332 592 010	50-240mm ²	50-185mm ²	50-185mm ²	50-150mm ²	50-240mm ²	126	33	20
332 614 010	50-240mm ²	50-240mm ²	50-240mm ²	50-240mm ²	50-240mm ²	126	35	21
332 602 010	95-400mm ²	95-300mm ²	95-240mm ²	95-240mm ²	95-300mm ²	140	38	24
332 617 010	185-500mm ²	185-400mm ²	185-240mm ²	185-240mm ²	185-400mm ²	170	42	26
332 603 010	300-800mm ²	300-630mm ²	-	300-400mm ²	300-630mm ²	230	50	33.3

HV Mechanical Connectors - Branch - Up to 72kV



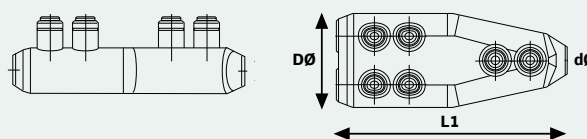
SICON HV branch mechanical connectors for copper & aluminium conductors






FEATURES

- Suitable for use on aluminium or copper conductors
- Conductor size based on circular stranded copper and aluminium
- For other conductor types please refer to table below

Part number	Conductor Range
332 447 010	See below

Branch Connectors Data



Part number						L1	DØ	dØ
332 447 010	50-240mm ²	50-185mm ²	50-185mm ²	50-150mm ²	50-240mm ²	162	68/33	20
332 631 010	70-300mm ²	50-240mm ²	70-240mm ²	70-185mm ²	70-300mm ²	158	71.5/35	22



Jointing Tech

Jointing Tech Branches:

Woking

Unit 19
Woking Business Park
Albert Drive
Woking
GU21 5JY

Tel: 01483 747747

Bristol

The Alpha Centre
Armstrong Way
Great Western Business Park
Yate
Bristol
BS37 5NG

Tel: 01454 322555

Norton Canes

Unit 15-16
Bellsizes Close
Norton Canes
Staffordshire
WS11 9TQ

Tel: 01543 450555

Quality and Industry Accreditation



Jointing Tech Group:

Langley Engineering Ltd

16 The Markham Centre
Theale
Reading
Berkshire
RG7 4PE

Tel: 0118 930 5990

Jointing Tech – Trace Heating Department

Unit 4 Eversley Way
Thorpe Industrial Estate
Egham
Surrey
TW20 8RG

Tel: 01784 279005

Jointing Technologies is part of Toolout Limited.
© Toolout Limited. All rights reserved.
Registered in England. Company Number 2281668

www.jointingtech.co.uk