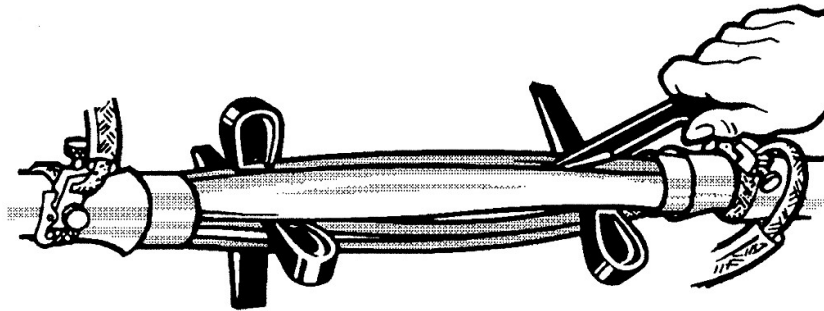
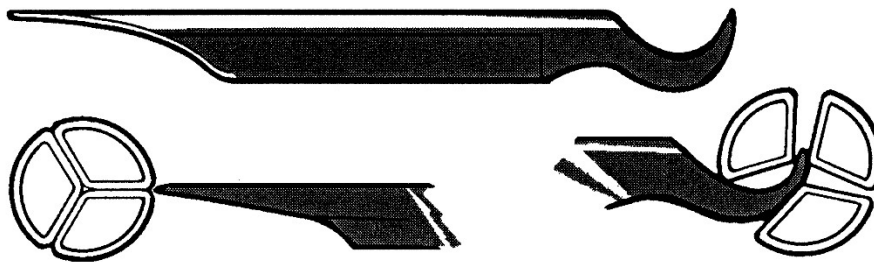


JTN Tools



		Length (mm)	Weight (grams)
JTN/1 (53485-37)	Mini-Hepwedge Insulated Core Separator	130	25
JTN/2 (53485-38)	Hepwedge Insulated Core Separator	160	52

Designed to aid the separation of cores during jointing, these wedges are moulded in nylon to resist detrimental wear at the tip during normal use. The smooth surface of the material ensures minimal damage to the core insulation, and they have been designed to reduce the risk of displacement whilst located between the cable cores. The thumb-and-finger grip assists insertion and removal, but it is small enough not to obstruct work on and around the joint.

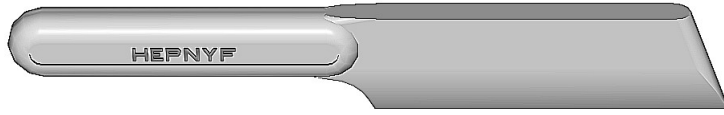


		Length (mm)	Weight (grams)
JTN/3 (53485-39)	Maxi-Hepwedge Insulated Core Separator	262	87

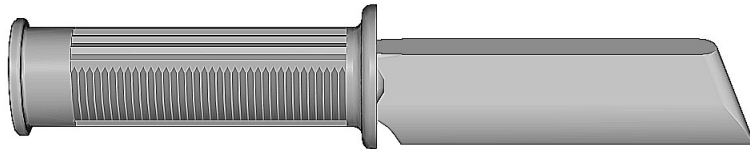
The Maxi-Hepwedge is moulded in nylon and is particularly suitable for three-core cables where a conventional wedge cannot be used; for solid aluminium or the larger stranded core cables; and for cables which have become over-tensioned after laying. To use the Maxi-Hepwedge, the cores are first parted at the selected position and the wedge end of the tool. The wedge is then withdrawn and the tip of the hook end inserted at this position. By exerting pressure on the body of the tool, the hook section will rotate around the selected core, separating it from the adjacent cores.

JTN Tools

JTN/4



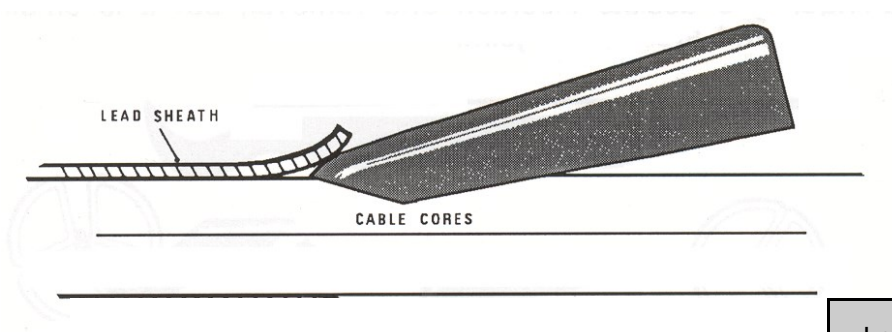
JTN/4A



		Length (mm)	Weight (grams)	Depth of Blade (mm)
JTN/4 (53485-40)	Hepnyf Insulated Hack-Knife	242	114	39
JTN/4A	Hepnyf Insulated Hack-Knife with Rubber Grip	248	178	39

The Hepnyf was originally developed for stripping the lead sheath from PILC cables; more recently it has found widespread application in the removal of the bedding compound from Waveform CNE cables, without damage to the soft aluminium neutral earth wires.

When stripping lead sheath the blade is so shaped that with normal care a clean cut can be made without damage to the underlying insulation, allowing the sheath of live cables to be safely removed. The blade of the Hepnyf can easily be re-sharpened with a file.



		Length (mm)	Weight (grams)
JTN/5 (53485-41)	Insulated Belling-Tool for Cable Sheaths	113	33

The Sicame Belling-Tool has been developed to enable jointers to bell cable earth sheaths during live jointing, where avoiding damage to insulation and observance of safety procedures are of primary importance. The tool is suitable for use on both lead and aluminium sheaths, although extra care is recommended when belling aluminium in order to avoid tearing.