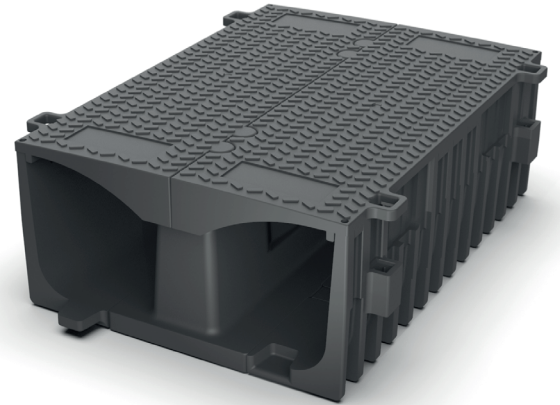


TROTRED is provided as a base unit with one divider and lid.
Please refer to additional options below as per your project-specific requirements.

PRODUCT INFORMATION	
WEIGHT	25kg
EXTERNAL DIMENSIONS (mm)	370H, 804W, 1000L
INTERNAL DIMENSIONS (mm)	300H, 648W, 1000L
MATERIAL	Recycled polymer
FIRE RETARDANT CHARACTERISTICS	Self-extinguishing
MANUFACTURING PROCESS	Injection moulded
BEND / TILT CHARACTERISTICS	Designed into the product for ease of install
PRODUCT BENEFITS	
LIGHTWEIGHT	Higher installation rates / lower installation costs
MATERIAL HANDLING	Reduced site & RRV handling
STRENGTH	Tested to withstand site traffic with lid reinforced with Durbar plate
SECURITY	Anti-vandal and anti-theft features
QUALITY	ISO 9001 Injection moulding process
ENVIRONMENTALLY FRIENDLY	Recycled polymer material / off-cut recovery scheme
PRODUCT INTERFACES	With other Trojan Services products and concrete troughs
HEALTH, SAFETY & ENVIRONMENT COMPARISON	
TROTRED	CONCRETE TROUGH
TWO PERSONS LIFT	No equivalent product
CUT USING STANDARD TOOLS	
NO DUST OR NOISE PRODUCED	
SMOOTH SURFACE FINISH	
MEDIUM CARBON FOOTPRINT	
RECYCLABLE	
ADD-ONS TROTRED	
DURBAR PLATE WITH SCREWS	hello@trojan-services.com for further information



SUSTAINABLE



LIGHTWEIGHT



STRONG



PERFORMANT



DURABLE



MADE IN BRITAIN



ADD-ONS

CONTACT AND ORDERS FOR UNITED KINGDOM



Email troughing@trackwork.co.uk **Phone** +44 1302 888666

WWW.TROJAN-SERVICES.COM - HELLO@TROJAN-SERVICES.COM